

# **WIND RIVER SPAS**

A stylized graphic of a wave, consisting of several horizontal lines that curve upwards and then downwards, positioned below the word 'SPAS'.

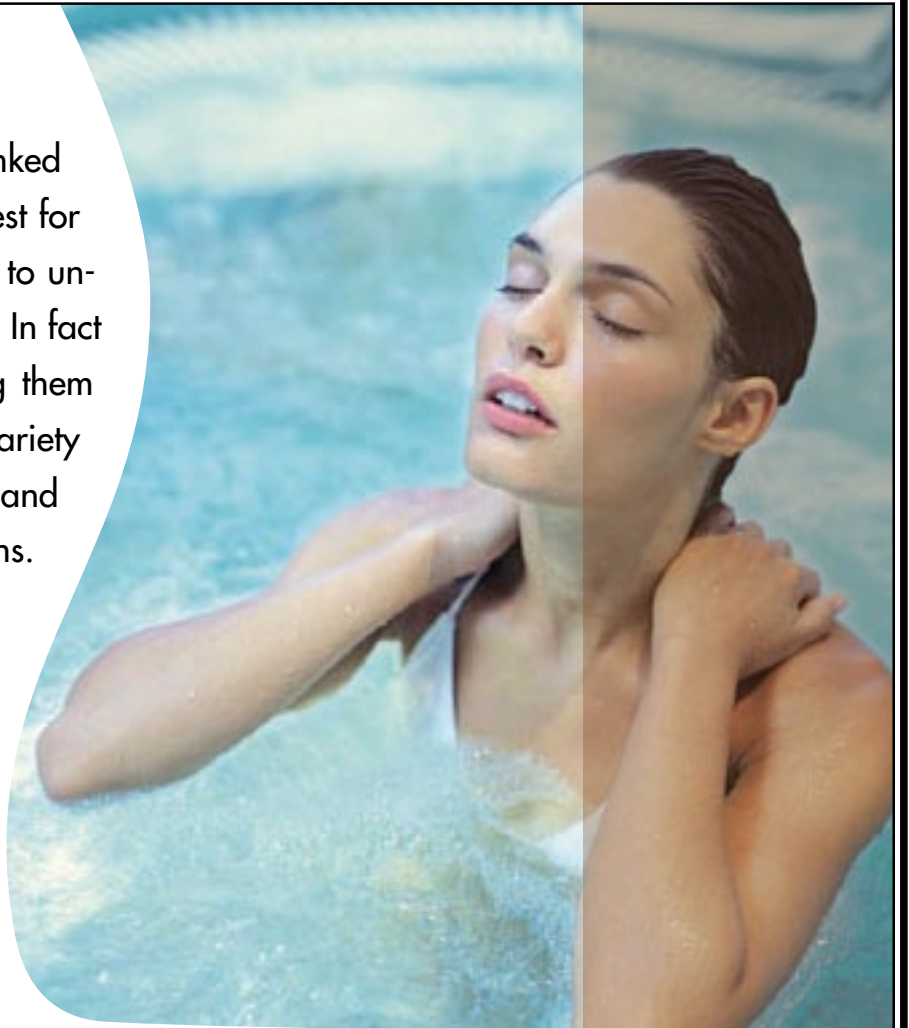
**BUYER'S GUIDE**

**W**ith many ailments and diseases recently being linked to stress, Americans are on a quest for relaxation. One of the best ways to unwind and de-stress is in a hot tub. In fact many doctors are recommending them for patients suffering from a variety of things from physical aches and pains to various mental conditions.

In the last several years hot tubs are increasingly found in the back yards of middle class America. They are no longer simply the playthings of the wealthy. There are many things to take into consideration when purchasing a hot tub. Does it have enough jets? Are the jets in the right spots? Is there enough horsepower to provide adequate water pressure?

Is it available in your favorite color? What kind of warranty is offered? All of these are valid concerns however many people don't consider the challenges presented by living a mile above sea level. Most hot tubs on the market today are manufactured at sea level in California and Florida. These two states have relatively temperate climates year round.

Climate presents the foremost problem to building a hot tub for Colorado and since 1978 Wind River Spas has been committed to developing one that overcomes the challenges presented by living 5,280 feet or more above sea level.



***In the last several years hot tubs are increasingly found in the back yards of middle class America.***

**With the cost of energy rising the last thing any of us need is a resource guzzling hot tub.**

**F**iltration is one of the most important aspects of a hot tub. This is what allows the same water to be used in the hot tub for long periods of time. There are a couple of methods the industry uses to create suction. Most hot tubs use a 2-speed time clock system. That means the pumps used to push water through the jets are programmed to turn on for several hours a day. This poses several problems. The primary issue is that as the number of jets increase the size of the pump also increases. Many hot tubs have 6 horsepower pumps and you are running it for 8 or more hours a day. Not only do you run the risk of the pump burning out you will almost definitely notice a significant rise in your monthly utility bill. With the cost of energy rising the last thing any of us need is a resource guzzling hot tub. More chemicals are necessary because when the pumps are not running the water stagnates and presents conditions suitable for bacterial growth. Scum lines or "bathtub rings" are common because if one exits the hot tub and it does not filter for several hours any body oils or other particles left behind have a chance to collect on the shell at the water line. Not

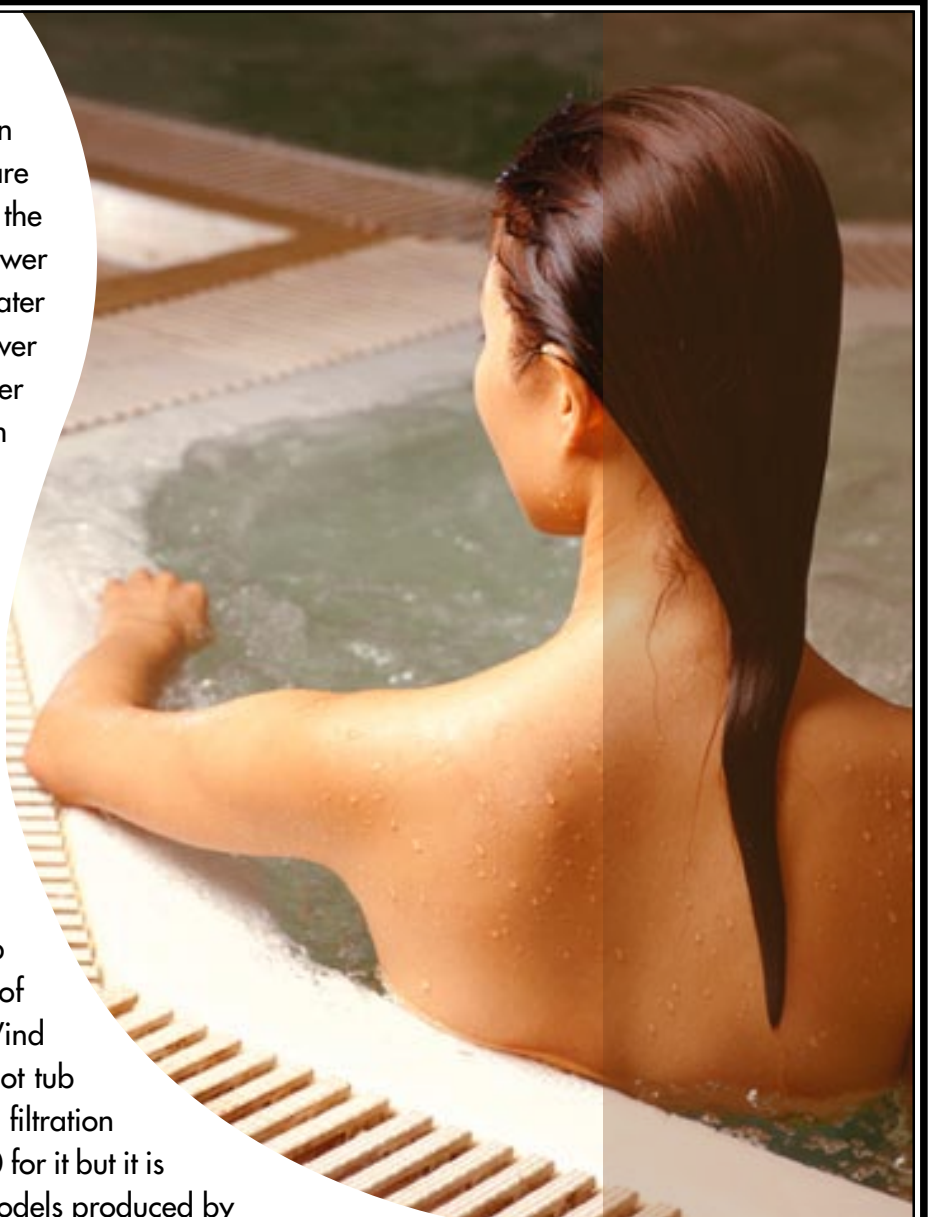
only is this unsightly and potentially embarrassing it creates unnecessary maintenance, as scrubbing the shell is sometimes required. On occasion it is nice to soak in a hot tub without running the jets. If you step into one in mid cycle the only way to turn off the pump is to reprogram it or cut power at the breaker panel. The average length of time between draining a hot tub using 2-speed time clock technology is about 3 months. That means that every 90 days hundreds of gallons of water are drained and replaced. Colorado is experiencing a

severe drought and water seems more valuable than gold at times. Many may feel this frequency is a waste of vital resources.



Wind River uses continuous clean filtration. The more powerful pumps are reserved for pushing water through the jets and a smaller fractional horsepower pump is used to continuously draw water through the filter. The 1/15 horsepower pump moves 55 gallons of water per minute and has a draw of just over an amp whereas the larger jet pump pulls between 3 and 5 amps. This translates into lower utility bills. A Wind River Spa's average monthly operating cost is between \$15 and \$25. Because there is constant movement in the water the risk of a scum line is nearly non-existent and the need for harsh sanitizing chemicals is greatly reduced. It is also possible to "just soak" without the noise of a larger pump, as the circulating pump is virtually silent. The average length of time between changing water in a Wind River Spa is about 6 months. Many hot tub manufacturers offer continuous clean filtration as an add on and charge up to \$1100 for it but it is a standard feature on 14 of the 18 models produced by Wind River.

If it has been a while since you have been in a hot tub or have only used one at the gym or a hotel/resort then you probably associate them with strong chemical odors that linger long after you have dried off. Due to the varied use of commercial or public hot tubs and health code requirements, high doses of chemical sanitizers are required to keep the water free of organisms. Ozone technology has been available in hot tubs for several years and has made several advances in the last few. Ozone is a gas that consists of 3 oxygen atoms. This gas is used to neutralize body oils and other particles organisms can use for food. Ozone occurs naturally, and there are 2 methods used to create the gas. Ultra violet ozonators use an ultra violet light bulb to produce ozone the way UV rays from the sun creates ozone in the outer atmosphere. This technology is expensive and has largely



been replaced by corona discharge units. Corona discharge ozonators use an open arc of electricity to produce ozone. The benefit of corona discharge is that it is significantly less expensive and more reliable with a greater output of ozone gas than the ultra violet system. This further decreases the amount of chemicals needed to keep the water clean. In fact the only chemical necessary for sanitizing is a shock that, due to its makeup, breaks down and gasses off in hours leaving the water chemical free. This not only allows you to avoid exposure to potentially harmful chemicals the water is safe to use on landscaping and does not have to be dumped down the drain every 6 months.



**Wind River uses a unique 5-stage insulation package.**

**I**nsulation is another element that should be scrutinized before selecting a hot tub. There are 2 main philosophies when it comes to insulating a hot tub. Most manufacturers employ full foam insulation. A half-pound density open cell foam is sprayed in the entire cavity between the shell and the skirt. This may seem like a good way to keep heat in the hot tub but it presents several problems. While it is not a common occurrence, hot tubs do have a tendency to leak. If a full foam tub springs a leak in the plumbing fixing it is very

labor intensive. The foam used by most manufacturers is essentially a giant sponge and encases 95% of the plumbing. Water will saturate the foam and make it difficult to know exactly where a leak is. In order to repair the leak a technician must first dig through the foam in order to locate the site of a leak. Digging through the foam can take several hours and on a hot tub out of its warranty period that

is a pretty large expense at an average of \$90-\$100 an hour. Once the foam is out of the way a repair can be made. Digging through the foam creates other challenges. First, there is a mess when the work is complete.

Usually a full foam hot tub that is leaking needs to be taken to a repair facility and there are costs associated with transportation of the unit. Foam needs to be sprayed back in place as to not compromise the insulation and efficiency of the hot tub. Repairs to leaks are impossible for the owner in most cases. The equipment, which generally consists of over \$1000 worth of pumps and control boards, sits outside of the insulated shell and plumbing. This scenario may work well in the warmer climates of California and Florida, but if power is lost during a winter storm there is a potential threat of freezing that equipment unless a heat source can be introduced. Most hot tub manufacturers do not cover any damage due to freezing. Colorado has a high population of rodents. Full foam hot tubs present an inviting habitat for mice and other rodents. The half-pound density foam is very easy to burrow through and the inside

of a hot tub provides warmth and a source of water. Not only are there health concerns associated with mice living in a hot tub; the second leading cause of leaks in Colorado is rodent chew. As they tunnel through the insulation and come across some flexible plumbing they can easily chew through that as well. Wind River uses a unique 5-stage insulation package. 70% of the hot tub is foam filled with 5-pound density closed cell structural foam. This foam is 10 times denser than the foam used in full foam hot tubs and is only sprayed in the center under the foot well and parts of the seating area.

It functions as an insulator as well as the primary support for the weight of the water. The other 30% inside the cabinet is an air cavity. Dead air spaces are used as insulators in multiple pane windows, thermoses and houses. This air cavity allows Wind River to give easy access to 95% of the plumbing. Only 5% of the plumbing runs through the foam. For obvious reasons this makes repairing a leak quick and easy and when the hot tub is out of its plumbing warranty many will be able to repair a leak without having to pay a service technician. A dead air space is only successful as an insulator if heat can be trapped inside it. The next stage of insulation in a Wind River Spa is 2-inch thick bead-board insulating foam.



*The entire under area of the spa shell is 70% foam filled with high-density structural foam for additional insulation and support. This allows for maximum support and insulation, while enabling access to over 90% of plumbing in case a repair is necessary in the future life of the spa.*

**Wind River has developed a patented technique that makes their shells UV friendly.**

This foam is placed between the perimeter supports and functions as an obstruction to warm air escaping the cavity. Around these foam panels is a plastic vapor barrier, which further seals the air cavity. The skirt or cabinet itself is made of a hollow core polyvinyl chloride, which has the look of wood. The fact that the material has a hollow core means that there is yet another air cavity. To top it off, Wind River has employed a molded plastic base that helps with the overall insulation and keeps rodents, snakes, spiders and hornets out of the hot tub. This also eliminates the concern for wood rot as no wood is used on the outside of the hot tub. Because of the overwhelming success of the 5 stage insulation during the snow storm of March 2003, Wind River Spas is the only hot tub manufacturer that offers a 3 year warranty against freeze ups. Several Wind River customers in Indian Hills survived a week without power and zero hot tubs suffered freeze damage.

**T**he other main area of concern for Colorado residents who want to own a hot tub is shell construction. Most hot tubs on the market today have an acrylic surface and a fiberglass sub structure.

A thin, flat sheet of acrylic is heated up until it is malleable and then it is vacuum formed onto a fiberglass mold. When the shell cools a 1/2 inch layer of fiberglass is sprayed onto the back of the shell. Colorado experiences drastic shifts in temperature in very short time spans sometimes 50 degrees in a 6-8 hour span.

All materials react to temperature shifts. As the temperature rises, materials expand and as the temperature falls they contract. The problem is that fiberglass

and acrylic have very different properties. Fiberglass is rigid and reacts more slowly to temperature changes than acrylic. This leads to visible imperfections in the shell. These can be anything from boils to cracks to complete de-lamination. Manufacturers protect themselves from covering this type of damage by making



exclusions to the warranty if the hot tub is exposed to direct sunlight, which most interpret as simply having it outside. These issues are mainly cosmetic but larger cracks allow water to get between the acrylic and fiberglass and create conditions suitable for a bacterial growth.

Colorado also experiences a much higher UV index than the rest of the country. Ultra violet rays from the sun increase in intensity as altitude increases. These rays are damaging to the skin as well as many other things including hot tubs. It can be a sunny 32-degree day in Colorado and UV rays can cause the surface temperature of the hot tub to rise. When the sun goes down and the UV rays are no longer heating the surface of the tub, the shell materials contract at a staggering rate.

Wind River uses an ABS (Acrylonitrile Butadiene Styrene) backed acrylic. This material is twice as thick as standard acrylic and consists of 2 chemically bonded layers. The surface or cosmetic layer is the same as a fiberglass spa but the substructure is a much denser heat resistant acrylic. The two materials are identical in the way they react to shifts in temperature, which eliminates the possibility of cracks and other surface imperfections. To address the UV issue, Wind River has developed a patented technique that makes their shells UV friendly. A mixture of mortar and fibers are sprayed on the back of the shell. This prevents hot spots from developing on the shell due to ultra violet rays by drawing heat away from the surface and directing it into the 5-pound density foam. This eliminates the need to make ridiculous exclusions to the warranty. In fact the only exclusion in Wind River Spas' no fault warranty is misuse or abuse of the product.

**T**here are many things to consider before deciding to spend thousands of dollars on a hot tub. Living in the beautiful state of Colorado presents issues most people would not even think about. It is imperative to look below the surface at how a spa is engineered and constructed. Making an informed decision can result in saving thousands and avoiding the nightmare owning a hot tub in Colorado can be.



*The acryment is applied to the back of the Lucite Acrylic Shell acting as a heat sink, which draws the UV and heat into this sub surface dispersing it evenly, instead of damaging the surface of the acrylic. The Acryment eliminates the uneven expansion and contraction associated with fiberglass backed shells that are known for there blistering and cracking. This acryment re-enforcement process is unique to Wind River Spas.*







*The Wind River Buyer's Guide was developed for the use and education of the consumer, detailing specs for the top 20 spa manufacturers in Colorado.*

**Manufacturer**

**WIND RIVER SPAS**

**Built in Colorado. 24 hour continuous clean filtration. 5 stage arctic seal insulation. ABS backed shell with exclusive UV friendly finish and microban standard.**

**Shell**

ABS backed Acrylic Shell with exclusive UV friendly finish.

**Cabinetry**

Timberstone redwood/coastal or Heart redwood

**Insulation**

Five Stage Arctic Seal

**Filtration**

50 square foot with telescopic filter basket

**Water Care**

Ozone water purification system, corona discharge standard

**Jet System**

Hydrotherapy Waterway Jets; power storm adjustable, power storm galaxy, whirlpool, deluxe precision adjustable, precision, deluxe precision, storm roto adjustable, mini storm twin roto, mini storm adjustable, large face storm roto adjustable, and waterfall

**Pumps**

5.0 Horsepower, 56 frame, 2-speed, 220 volts and 1/15 horsepower circulation pumps

**Heating**

5.5kw, stainless steel, with flow through housing

**Lighting**

12 volt lights with mood lenses (optional). Multi-color LED (standard)

**Controls**

Balboa digital top side control with digital read out and remote spa side



The Wind River Buyer's Guide was developed for the use and education of the consumer, detailing specs for the top 20 spa manufacturers in Colorado.

**Manufacturer**

**ARTESIAN SPAS**

**Manufactured in California; costly to send for factory repairs. Full foam insulation. Fiberglass backed shell.**

**Shell**

Fusion system of Lucite® acrylic, vinyl ester vapor barrier & resin composite

**Cabinetry**

PermaWood faux wood cabinet with option of redwood

**Insulation**

Full, high-density foam insulation with ABS bottom

**Filtration**

Three 50-sq. ft. filters, 1 filter being a Microban® antimicrobial filter

**Water Care**

Whisper Pure water management system with ozone generator purification system

**Pumps**

3-hp pumps with patented DirectFlow™ operating system

**Heating**

Laing fault-free heater and flow switch

**Controls**

Digital topside controls



*The Wind River Buyer's Guide was developed for the use and education of the consumer, detailing specs for the top 20 spa manufacturers in Colorado.*

**Manufacturer**

**ARTIC SPAS**

**Manufactured in Canada; costly to send for factory repairs. Fiberglass backed shell.**

**Shell**

Molded acrylic with fiberglass backing

**Cabinetry**

Clear Canadian western red cedar cabinet

**Insulation**

Perimeter Heatlock™ insulation system

**Filtration**

900 sq. ft. polypropylene filter

**Water Care**

Peak Ozone System™ standard

**Jet System**

Fusion™ and VOS™ jetting systems

**Pumps**

4 hp, 56 frame pumps, ReliaFlo™ 2.0 hp

**Heating**

Arctic 5.5 kW Tru-Guard heater

**Controls**

Metapak Gecko digital controls



The Wind River Buyer's Guide was developed for the use and education of the consumer, detailing specs for the top 20 spa manufacturers in Colorado.

**Manufacturer**

**BEACHCOMBER**

**Manufactured in Canada; costly to send for factory repairs. Full foam insulation. Fiberglass backed shell.**

**Shell**

Acuralux™

**Cabinetry**

Cedar cabinetry

**Insulation**

Full Foam

**Filtration**

Microfilter

**Jet System**

Ener-Jet™



The Wind River Buyer's Guide was developed for the use and education of the consumer, detailing specs for the top 20 spa manufacturers in Colorado.

**Manufacturer**

**CALDERA SPAS**

**Full foam insulation.**

**Shell**

Acrylic with Durabond spa reinforcement system

**Cabinetry**

Ecotech® cabinet

**Insulation**

Full-foam

**Filtration**

75-sq. ft. top-loading cartridge with telescoping skimmer

**Water Care**

Continuous circulation pump, Monarch® CD ozone system & silver cartridge

**Jet System**

Hot Tub Circuit Therapy™ system

**Pumps**

ReliaFlo™ 2-hp pumps

**Heating**

EnergyPro® system

**Controls**

Advent™ control system



The Wind River Buyer's Guide was developed for the use and education of the consumer, detailing specs for the top 20 spa manufacturers in Colorado.

**Manufacturer**

**CAL SPAS**

**Full foam insulation. 2 speed filtration (higher end spas are continuous clean). Fiberglass backed shell**

**Shell**

Acrylic with exclusive Fiber Steel Construction™ & heavy fiberglass backing

**Cabinetry**

Exclusive top-quality Cal-Select™ UV-resistant thermal non-wood synthetic material with pressure-treated framing

**Insulation**

High-density full foam

**Filtration**

75 sq. ft. Bio-Clean™ filter with exclusive Spa-Cal™ filtration system

**Water Care**

Exclusive Cal Zone Quest™ 2000 ozonator

**Jet System**

Storm JX, Storm SF, Storm CX, Accu-therapy, Accu Neck Blasters,

**Pumps**

6.2-break hp, 1-speed filtration

**Heating**

5.5-kW exclusive XL-Heat Exchanger™

**Controls**

Exclusive 9000 digital with clock and inverted face



*The Wind River Buyer's Guide was developed for the use and education of the consumer, detailing specs for the top 20 spa manufacturers in Colorado.*

**Manufacturer**

**CATALINA SPAS**

**Full foam insulation. Fiberglass laminate.**

**Shell**

Acrylic Backed with Fibreglass Laminate

**Cabinetry**

Genuine Philippine mahogany

**Insulation**

Full Foam

**Filtration**

60 sq. ft. filter

**Water Care**

12 Hour Cycle filtration

**Jet System**

Hydrotherapy Jets

**Pumps**

56 frame dual speed MagniTech pumps

**Heating**

5.8 kw Heater

**Controls**

Balboa Instruments



*The Wind River Buyer's Guide was developed for the use and education of the consumer, detailing specs for the top 20 spa manufacturers in Colorado.*

**Manufacturer**

**COAST SPAS**

**Manufactured in Canada; costly to send for factory repairs. Full foam insulation. Fiberglass backed shell.**

**Shell**

Aristech acrylic/Owens Corning™ fiberglass; steel-reinforced shell

**Cabinetry**

Cedar (natural, redwood or graystone) or composite

**Insulation**

Full foam

**Filtration**

175-sq. ft. Cyclonic Filtration System™

**Water Care**

Deluxe Monster Skimmer, Crystal Clear Purification Chamber™, Coast Spas' red corona discharge ozone system

**Jet System**

High hydrotherapy jets

**Pumps**

Franklin Variable Force 20-amp, 7-hp pumps

**Heating**

Dual-mode titanium heating system

**Controls**

Deluxe Gecko electronics





*The Wind River Buyer's Guide was developed for the use and education of the consumer, detailing specs for the top 20 spa manufacturers in Colorado.*

**Manufacturer**

**COLEMAN SPAS**  
**Fiberglass backed shell.**

**Shell**

Acrylic with Fiberglass backing

**Cabinetry**

DuraMaax™

**Insulation**

Thermo-Lock IV™

**Filtration**

CleanZone system for 100-percent filtration

**Water Care**

Balanced filtration featuring Coleman Spas® First Filter™ and Powerworks® filtration pump

**Jet System**

Cyclone swirl jets, Zone Therapy™ system, Comfort Collars™

**Pumps**

2.0 hp/3.6 bhp, 230 volts

**Heating**

5.5-kW stainless steel heater

**Controls**

Digital, easy to reach from inside or outside



The Wind River Buyer's Guide was developed for the use and education of the consumer, detailing specs for the top 20 spa manufacturers in Colorado.

**Manufacturer**

**DIAMANTE SPAS**

**Fiberglass shell.**

**Shell**

Fiberglass

**Cabinetry**

Wood

**Insulation**

Winter-Pak Foam™ and the Thermos-Foil Insulation™

**Filtration**

Diamante Ultimate Filtration System™

**Water Care**

Continuous Filtering+ System™, Diamante Ozone System™

**Pumps**

5.0 Peak Horsepower (3.0 Continuous Duty)

**Heating**

NT-4000 Heater™



*The Wind River Buyer's Guide was developed for the use and education of the consumer, detailing specs for the top 20 spa manufacturers in Colorado.*

**Manufacturer**

***DIMENSION ONE SPAS***  
***Full foam insulation.***

***Shell***

DuraTex

***Cabinetry***

Western Red Cedar in red or gray

***Insulation***

100 percent full-foam

***Filtration***

EZ Care Filtration Cartridge

***Water Care***

CD Ozonator, CrystalZone™

***Jet System***

VCR™ adjustable hydrotherapy jets, high-volume swim jets

***Pumps***

5 hp dual speed pump, high-velocity circulation pump

***Heating***

11 kw heater, 5.5 kw heater

***Controls***

Separate electronic controls for each pool area



The Wind River Buyer's Guide was developed for the use and education of the consumer, detailing specs for the top 20 spa manufacturers in Colorado.

**Manufacturer**

**GULF COAST SPAS**

**Full foam insulation.**

**Shell**

Acrylic

**Cabinetry**

Redwood

**Insulation**

Thermazone Insulation Foam

**Filtration**

Vortec Filtration System

**Water Care**

AquaClara Water Management System

**Pumps**

5.0 Horsepower

**Controls**

SMD Control System



The Wind River Buyer's Guide was developed for the use and education of the consumer, detailing specs for the top 20 spa manufacturers in Colorado.

**Manufacturer**

**HOT SPOT**

**Full foam insulation.**

**Shell**

Granite-like Shell

**Cabinetry**

Redwood, or Optional Simulated Wood

**Insulation**

Full Foam

**Filtration**

75 sq. ft. top loading

**Water Care**

Freshwater®III Ozone and FreshwaterAg+®

**Jet System**

Directional Hydromassage Jets, Rotary Hydromassage Jets, Precision® Jets

**Pumps**

1.5 Horsepower, 2.6 Horsepower

**Heating**

No-Fault®

**Controls**

IQ 2020™ 230v/50 amp, 60Hz



*The Wind River Buyer's Guide was developed for the use and education of the consumer, detailing specs for the top 20 spa manufacturers in Colorado.*

**Manufacturer**

**HOT SPRING SPAS**

**Full foam insulation.**

**Shell**

Pearl or copper metalescent, jade or spa blue granite-like acrylic

**Cabinetry**

Everwood® (alternative wood)

**Insulation**

Full-foam

**Filtration**

325 sq. ft., top loading, 100-percent no-bypass filtration (Tri-X™)

**Water Care**

EverFresh® water care system optional

**Jet System**

Moto-Massage® jet, Soothing Seven® jets, JetStream® jets, Rotary Hydromassage jets, Directional Hydromassage jets, HydroStream™ jets, Rotary Precision® jets, Directional Precision® jets

**Pumps**

5 hp dual speed pump, high-velocity circulation pump

**Heating**

11 kw heater, 5.5 kw heater

**Controls**

Separate electronic controls for each pool area



*The Wind River Buyer's Guide was developed for the use and education of the consumer, detailing specs for the top 20 spa manufacturers in Colorado.*

**Manufacturer**

**HYDROPOOL SPAS**

**Full foam insulation. Fiberglass backed shell.**

**Shell**

Fiberglass-reinforced acrylic

**Cabinetry**

Western red cedar or Everlast plastic

**Insulation**

Full-foam

**Filtration**

Self-Clean Plus system and surface skimmer

**Water Care**

Ozonator and built-in brominator

**Jet System**

Versa Massage

**Pumps**

Dual-speed circulation, 3-hp continuous jet pumps, 4-hp booster pump

**Heating**

4.0 kW

**Controls**

Illuminated finger-touch electronic controls



*The Wind River Buyer's Guide was developed for the use and education of the consumer, detailing specs for the top 20 spa manufacturers in Colorado.*

**Manufacturer**

**JACUZZI SPAS**

***Styrofoam insulation. Fiberglass backed shell.***

**Shell**

TriFusion System™ (acrylic, vinylester vapor barrier, resin composite)

**Cabinetry**

Top quality selected wood or UV-resistant thermal plastic

**Insulation**

Full-foam

**Filtration**

60-sq. ft. area; easy-to-clean filters, 24-hour circulation system

**Water Care**

ProClear™ Water Management System

**Jet System**

Total Foot Jet Therapy, PowerPro MX, PowerPro LX, PowerPro FX

**Pumps**

2 speed, 4.2 break hp, 2.5 continuous hp Pump

**Heating**

Low-watt density, less than 75 watts per square inch

**Controls**

Digital, easy to reach from inside or outside





*The Wind River Buyer's Guide was developed for the use and education of the consumer, detailing specs for the top 20 spa manufacturers in Colorado.*

**Manufacturer**

**MARQUIS SPAS**

**Full foam insulation. Fiberglass backed shell.**

**Shell**

Acrylic

**Cabinetry**

DuraWood cabinet

**Insulation**

Full Foam

**Filtration**

Patented Vortex skimmer

**Water Care**

Smart Logic™, Solid-state ozone system

**Jet System**

Dual-speed jet pump

**Pumps**

High-flow, chemical resistant, Incoloy 825 heating system

**Heating**

Full spa/overall body, Isolated therapy/upper or lower body, whirlpool

**Controls**

Waterproof controls with soak timer and settings lock



*The Wind River Buyer's Guide was developed for the use and education of the consumer, detailing specs for the top 20 spa manufacturers in Colorado.*

**Manufacturer**

**MASTER SPAS**  
**Fiberglass backed shell.**

**Shell**

Lucite® Microban® acrylic

**Cabinetry**

DuraMaster™ polymer or Master Wood™ polymer

**Insulation**

Arctic Master system with high-density insulation & 1-in. wallboard foam

**Filtration**

ECO PUR 4-stage filtration and purification system

**Water Care**

High-output corona discharge ozone generator

**Jet System**

Power series, Mini series, Standard series, Master Blasters™

**Pumps**

2-speed, 6-hp pumps; 4.5-hp 56 frame pump; circulation pump

**Heating**

M-7, 5.5-kW 825 Incalloy system

**Controls**

MS 8000 system Balboa electronics with LCD scrolling



*The Wind River Buyer's Guide was developed for the use and education of the consumer, detailing specs for the top 20 spa manufacturers in Colorado.*

**Manufacturer**

**NORDIC SPAS**

**Shell**

PermaShell™

**Cabinetry**

Western Red Cedar

**Insulation**

2lb Density Closed Cell, Polyurethane Foam

**Filtration**

Skimming, Top Load Cartridge

**Water Care**

DEL Ozone generators

**Jet System**

Hydro Air Jets

**Pumps**

Aqua-Flo 230 V Pump

**Controls**

Gecko Electronic controls



The Wind River Buyer's Guide was developed for the use and education of the consumer, detailing specs for the top 20 spa manufacturers in Colorado.

**Manufacturer**

**SARATOGA SPAS**

**Full foam insulation.**

**Shell**

Acrylic with ABS backing

**Cabinetry**

Cedar or synthetic

**Insulation**

Full foam

**Filtration**

135 sq. ft.; 24-hour Whisper Clean® Microban® filtration

**Water Care**

Ozone induction system with vortex circulation

**Jet System**

CFE (Coplanar Fluid Ejector) hydrotherapy, Whisper Clean®, Cluster, Versa, Gatling, Power Stream™, Power Massage™, Power Massage Plus™

**Pumps**

3 hydrotherapy; 1 circulation

**Heating**

4-kW vertical heater, on-demand response

**Controls**

Pre-programmed digital controls



*The Wind River Buyer's Guide was developed for the use and education of the consumer, detailing specs for the top 20 spa manufacturers in Colorado.*

**Manufacturer**

**SUNDANCE SPAS**

**Full foam insulation. Fiberglass backed shell.**

**Shell**

Textured or marbled acrylic offered in various colors

**Cabinetry**

Redwood & cedar available without stain; synthetic wood available

**Insulation**

Full foam

**Filtration**

2-stage MicroClean™ with 20-in. Slipstream™ weir & automatic Brominator™

**Water Care**

Built-in Brominator™ and 24-hour circulation pump

**Jet System**

Fluidix ST™ jets, Fluidix Intelli-Jets™, Accu-Pressure™ jets, whirlpool jets, Pulsator™ jets, Vortex™ jets

**Pumps**

TheraMax™ high-flow pumps

**Heating**

Efficient Energy Smart™ with titanium coils

**Controls**

850 Series Sentry™ command control panel; LCD user interface with display and pre-programmed customization, includes remote panel for secondary jets/air control



The Wind River Buyer's Guide was developed for the use and education of the consumer, detailing specs for the top 20 spa manufacturers in Colorado.

**Manufacturer**

**SWEETWATER SPAS**

**Full foam insulation.**

**Shell**

3 Layer Dura Bond Shell

**Cabinetry**

UV-resistant thermal plastic

**Insulation**

Full Foam

**Filtration**

Patented SlipStream™ Filtration

**Jet System**

Jets For Every Muscle Group

**Pumps**

Powerful, Energy-Efficient Pumps

**Heating**

Low-flow Heater

**Controls**

Programmed Command Center



The Wind River Buyer's Guide was developed for the use and education of the consumer, detailing specs for the top 20 spa manufacturers in Colorado.

**Manufacturer**

**TIGER RIVER**

**Full foam insulation.**

**Shell**

Granite-like Shell

**Cabinetry**

Redwood, or Optional Simulated Wood

**Insulation**

Full Foam

**Filtration**

75 sq. ft. top loading

**Water Care**

Freshwater®III Ozone and FreshwaterAg+®

**Jet System**

1.5 Horsepower, 2.6 Horsepower

**Pumps**

No-Fault® (4000w/230v)

**Heating**

Directional Hydromassage Jets, Rotary Hydromassage Jets, Precision® Jets

**Controls**

IQ 2020™ 230v/50 amp, 60Hz



The Wind River Buyer's Guide was developed for the use and education of the consumer, detailing specs for the top 20 spa manufacturers in Colorado.

**Manufacturer**

**VITA SPAS**

**Shell**

Lucite® cast acrylic with Microban®; Fiberlite™ substructure

**Cabinetry**

Excel Plus™

**Insulation**

InsulFoam™

**Filtration**

24-hour filtration

**Water Care**

BIOzone™ water purification system; VitAroma™ aromatherapy

**Jet System**

Spazerciser Turbo, Select-A-Swirl™, Pulsator, Quad Stream Plus™, Frontal massage, Calf/Thigh, Cluster/Acupressure, Wrist/Palm, Foot/Cluster, Finger Massage, Colorado River™, Midi River, Waterfall, Volcano

**Pumps**

4 hp (water), 1 hp (air)

**Heating**

No Blame™ heater

**Controls**

DISC programmable electronic controls