




# FITNESS SERIES

## ENDURANCE 90" X 90"

<b>SEATING</b>	5-7 Adults (Retreat whirl-pool, bench, bucket and lounge seating)
<b>DIMENSIONS</b>	90" x 90" x 38"
<b>WATER CAPACITY</b>	525 - 550 gallons
<b>HYDROTHERAPY JETS</b>	28 Duo-Tone; Graphite Gray Jets 
<b>DIGITAL CONTROLS</b>	Top side control with digital read out.
<b>LIGHTING</b>	2 - 4" Underwater LEDs
<b>WATERFALL</b>	8" Waterfall
<b>ICEBUCKET</b>	Optional
<b>SHELL</b>	ABS backed Acrylic Shell with exclusive UV friendly finish.
<b>SURROUND CABINET</b>	Highwood: Redwood, Gray, Brown, Mahogany or Tan
<b>INSULATION</b>	Five Stage Arctic Seal
<b>ELECTRICAL</b>	220 volt 50 amp
<b>PUMPS</b>	4.0 Horsepower, 56 frame, 2-speed, 220 volt, and 1/15 horsepower circulation pumps.
<b>HEATER</b>	5.5kw, stainless steel, with flow through housing.
<b>FILTER</b>	50 square foot with telescopic filter basket.
<b>OZONATOR</b>	Ozone water purification system, corona discharge standard.
<b>PILLOWS</b>	Standard
<b>WARRANTY</b>	5 year shell. 2 year no fault.
<b>COVER</b>	UL Approved Safety Cover



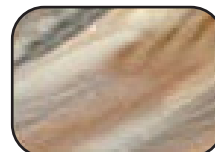
### SHELL COLOR OPTIONS



Whispering Winds



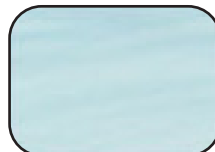
Storm Cloud



Tuscan Sun



Glacier Mountain



Whispy Blue



Alba



Sahara



Smoky Mountain

### SKIRT COLOR OPTIONS



Redwood



Gray



Brown



Mahogany



Tan