



ESCAPE SERIES

VOYAGE 82" X 82"

| | |
|--------------------------|--|
| SEATING | 4-5 Adults (Bench, bucket and lounge seating) |
| DIMENSIONS | 82" x 82" x 37.75" |
| WATER CAPACITY | 375 - 400 gallons |
| HYDROTHERAPY JETS | 14 Jets: 3 twin storm rotos 2 mini storm twin rotos 9 deluxe precision adj. |
| DIGITAL CONTROLS | Top side control with digital read out. |
| LIGHTING | 4" Underwater LED |
| WATERFALL | Optional |
| ICEBUCKET | Optional |
| SHELL | ABS backed Acrylic Shell with exclusive UV friendly finish. |
| SURROUND CABINET | Highwood: Redwood, Gray, Brown, Mahogany or Tan |
| INSULATION | Five Stage Arctic Seal |
| ELECTRICAL | 220 volt 50 amp |
| PUMPS | 2.0 Horsepower, 56 frame, 2-speed, 220 volts and 1/15 horsepower circulation pumps. |
| HEATER | 5.5kw, stainless steel, with flow through housing. |
| FILTER | 50 square foot with telescopic filter basket. |
| OZONATOR | Ozone water purification system, corona discharge standard. |
| PILLOWS | Standard |
| WARRANTY | 5 year shell. 1 year no fault. |
| COVER | UL Approved Safety Cover |



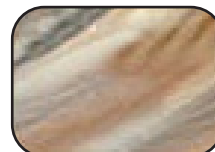
SHELL COLOR OPTIONS



Majestic Sky



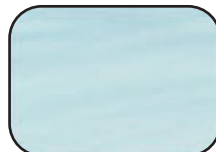
Storm Cloud



Tuscan Sun



Glacier Mountain



Whispy Blue



Alba



Sahara



Smoky Mountain

SKIRT COLOR OPTIONS



Redwood



Gray



Brown



Mahogany



Tan